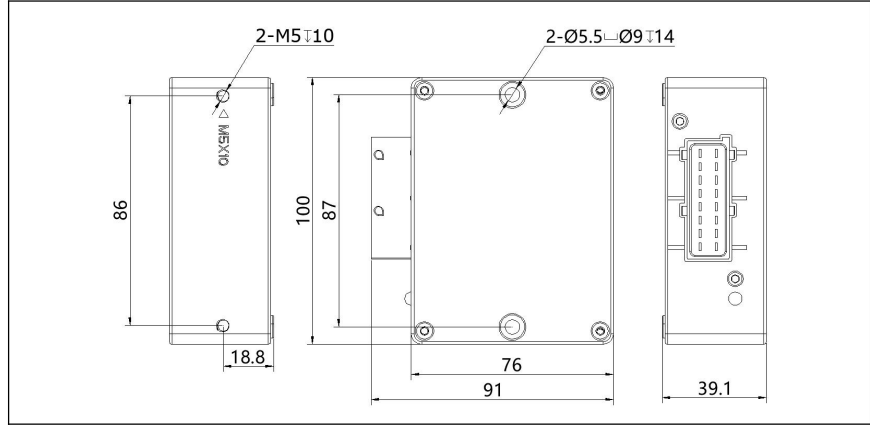


## SPC-SDIO-S0902

IO Module  
1 CAN  
Support CANopen  
Working Voltage  
8...32 V DC



**Technical Parameter**

Housing
Dimension (L× W× H)
Installation
Connector
Weight
Working temperature
Protection class
Total number of I/O channels
<b>Input</b>
Possible configurations
*All input ports have protection against wrong connection to power supply and grounding protection.
PI(AB): It can be equipped with 1 set of orthogonal coding input types; High/low level configurable: refers to digital input high and low effective can be configured, and the threshold voltage can be adjusted by software.
<b>Output</b>
Possible configurations
*All digital output ports have short circuit feedback, short circuit and overheat protection
Working voltage UEE
Undervoltage monitoring Undervoltage cut-off
Current consumption
CAN Communication Baud rate Communication protocol
Processor

**Description**

aluminum housing
100×91×39.1 mm
2pcs M5×30 (side) or 2pcs M5×10(Bottom) screw mounting
16-Pin Tyco
0.37 kg
-40...85 °C
IP67
11channels (9 Inputs/2 Outputs)
Up to 9 inputs can be configured

Qty	Signal	Remark	
2 or or	Resistance Analog Digital	1Ω...600Ω 0...10V High effective input, threshold configurable	AI <sup>R</sup> AI <sup>U</sup> DI <sup>H</sup>
1 or or	Resistance Analog Digital	16Ω...10kΩ 0...10V High effective input, threshold configurable	AI <sup>R</sup> AI <sup>U</sup> DI <sup>H</sup>
2 or or	Frequency Digital Quadrature input	1Hz...30 kHz High effective input, threshold configurable A set of quadrature signal inputs can be formed	PI DI <sup>H</sup> PI <sup>(AB)</sup>
4 or	Analog Digital	0...10V High/low level configurable	AI <sup>U</sup> DI <sup>H/L</sup>

Up to 2 outputs can be configured

Qty	Signal	Remark	
2 or or	DO <sup>H</sup> DO <sup>L</sup> H bridge	Digital High Side Output Digital low side output Form an H-bridge output	DO <sup>H</sup> DO <sup>L</sup> H <sup>Bri</sup>

**Technical Parameters**

8...32 V DC
UBB ≤ 8V, When t ≤ 350ms UBB ≤ 7V, When t ≤ 350ms
≤ 75mA (No external load at 24 V)
CAN 2.0 A/B 20 kbits/s...1 Mbits/s (Default 125 kbits/s) Default ID: 0x73
32-bit advanced MCU